

**Loading:**

Monday – Friday 24hrs  
Saturday 0600-1200

**PPE Requirements:**



**Additional Information:**

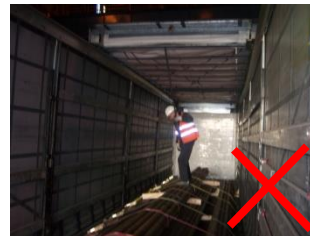
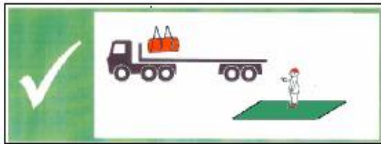


**Reporting/Arrival:**

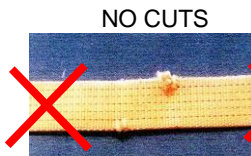


**Loading/Securing:**

Stand in **GREEN** area during loading



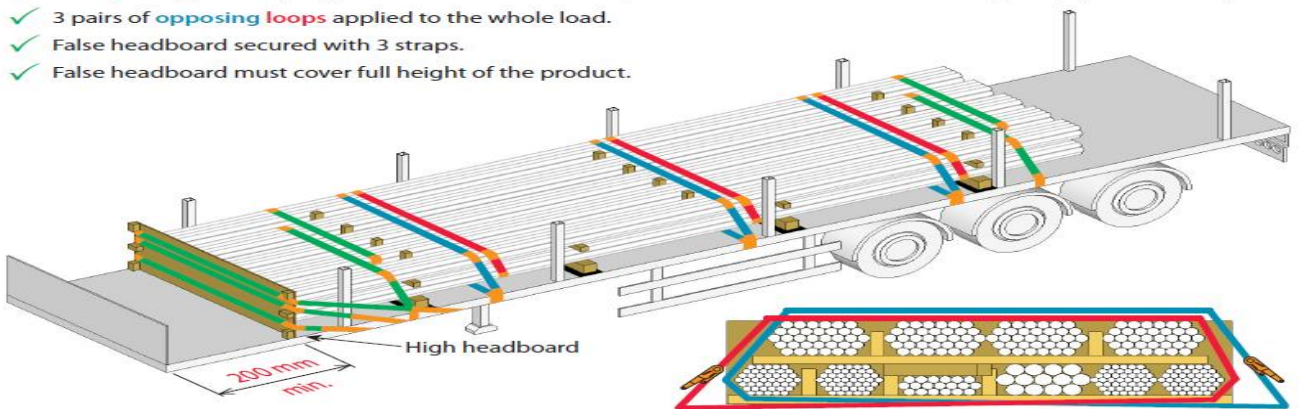
Minimum 12 Straps **LC 2000 daN**



**LOADS MUST BE SECURED IN THE LOADING BAY – PLEASE HAVE STRAPS READY BEFORE ENTERING THE BAY**

**3.2 Rectangular and single layer load build**

- ✓ 2 **belly-wrapped** straps applied to the middle bundles, maximum 3 bundles within a belly-wrap (see Section 5).
- ✓ 3 pairs of **opposing loops** applied to the whole load.
- ✓ False headboard secured with 3 straps.
- ✓ False headboard must cover full height of the product.



*Cross-sectional view of opposing loop restraint applied to the whole load. Edge protection omitted for clarity.*

**SECURING INFORMATION WILL BE GIVEN AT POINT OF LOADING**