

Tata Steel Strip Products – Port Talbot

**Loading:**

Monday – Friday 24 hours  
Saturday-Sunday Check

**PPE Requirements:**



**Additional Information:**

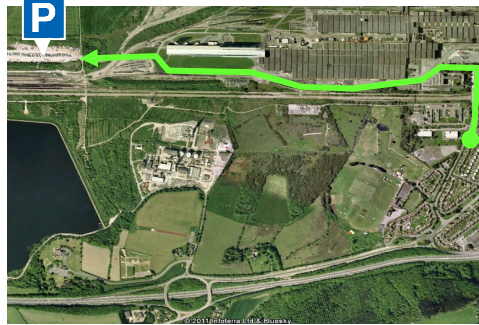


**Reporting/Arrival:**

Loading bay



On arrival stop at security



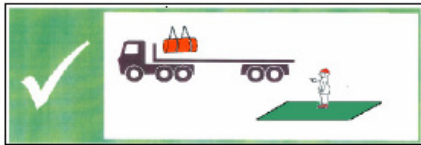
Drive to trailer park



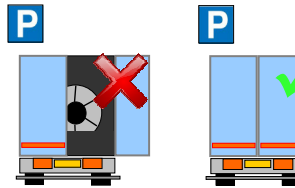
Report to traffic office with loading reference

**Loading/Securing:**

Stand in green area during loading



DOORS MUST BE KEPT CLOSED WHEN DRIVING ON SITE

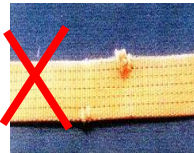


No loose or damaged well boards

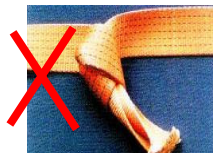
Straps LC 2000 daN



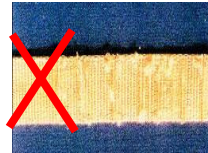
NO CUTS



NO KNOTS

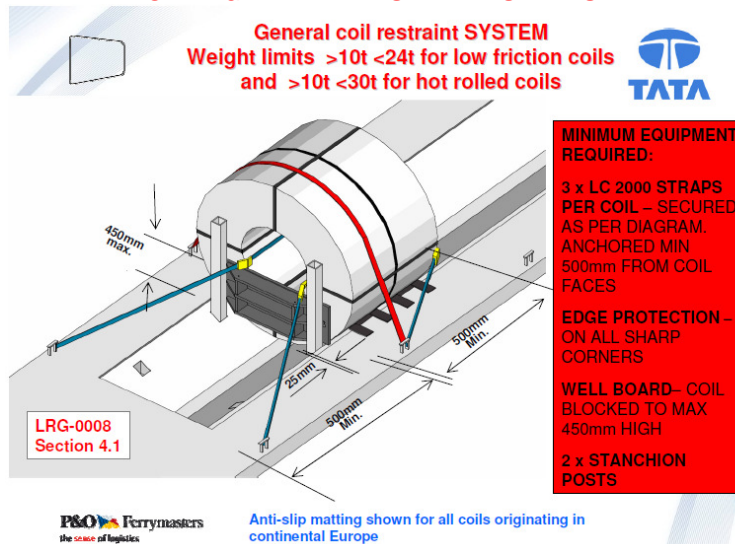


NOT WORN



Clean and tidy coil well

**LOADS MUST BE SECURED IN THE LOADING BAY – PLEASE HAVE STRAPS READY BEFORE ENTERING THE BAY**



Tata Steel Strip Products – Port Talbot

**Loading:**

Monday – Friday 24 hours  
Saturday-Sunday Check

**PPE Requirements:**



**Additional Information:**

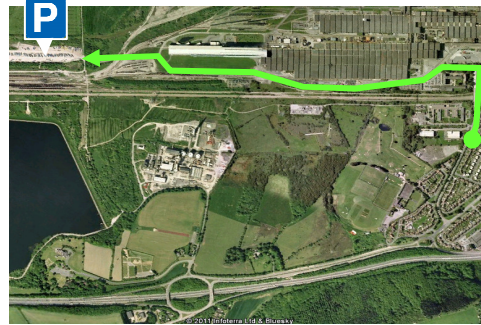


**Reporting/Arrival:**

Loading bay



On arrival stop at security



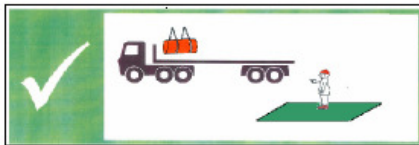
Drive to trailer park



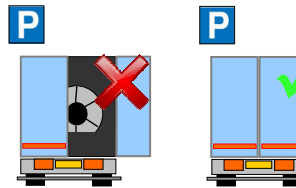
Report to traffic office with loading reference

**Loading/Securing:**

Stand in green area during loading



DOORS MUST BE KEPT CLOSED WHEN DRIVING ON SITE

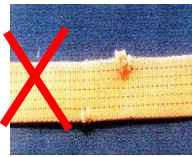


No loose or damaged well boards

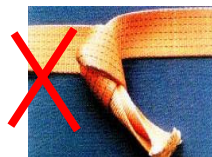
Straps LC 2000 daN



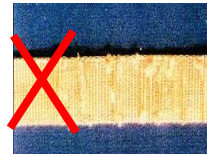
NO CUTS



NO KNOTS



NOT WORN



Clean and tidy coil well

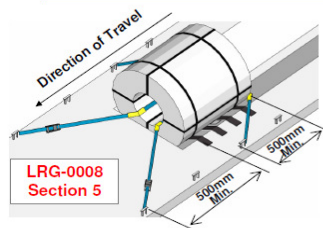
**LOADS MUST BE SECURED IN THE LOADING BAY – PLEASE HAVE STRAPS READY BEFORE ENTERING THE BAY**

**Restraint system without stanchion posts**



**MINIMUM EQUIPMENT REQUIRED:**

2 x LC 2000 STRAPS PER COIL – SECURED AS PER DIAGRAM  
EDGE PROTECTION – ON ALL EXPOSED CORNERS



Anti-slip matting shown for all coils originating in continental Europe

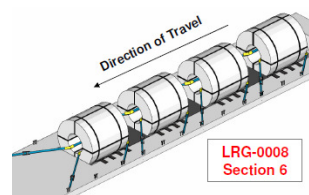
This restraint method is **NOT** to be used for **topple sensitive coils**

**Restraining multiple coils**  
Weight limits <10t



**MINIMUM EQUIPMENT REQUIRED:**

2 x LC 2000 STRAPS PER COIL – SECURED AS PER DIAGRAM  
EDGE PROTECTION – ON ALL EXPOSED CORNERS



Anti-slip matting shown for all coils originating in continental Europe

This restraint method is **NOT** to be used for **topple sensitive coils**.

- First Coil must be positioned against the front of the well for forward restraint.
- No more than **ONE** well board to be used as blocking between coils.
- Individual coil weights **MUST** not exceed **10 tonnes**.
- Coils above 10 tonnes must be restrained against stanchion posts as shown in sections [4.1 guideline](#).