

Tata Steel Tubes, Corby Collection Plan

Loading:

ColdForm		Mon- Fri	24 hours
CenFin			
6"		Mon- Thu	0700-1500
SR		Fri	2100 -0700
			0700-1500

Additional Information:

PPE Requirements:



Reporting/Arrival:



Site entrance



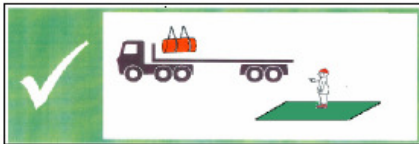
Stop at weigh bridge



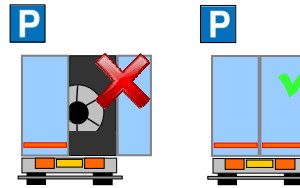
Follow directions to loading point

Loading/Securing:

Stand in green area during loading



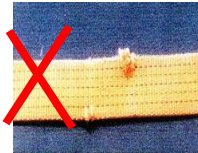
DOORS MUST BE KEPT CLOSED WHEN DRIVING ON SITE



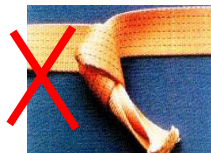
Straps LC 2000 daN



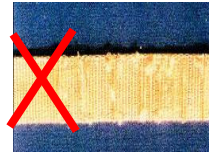
NO CUTS



NO KNOTS

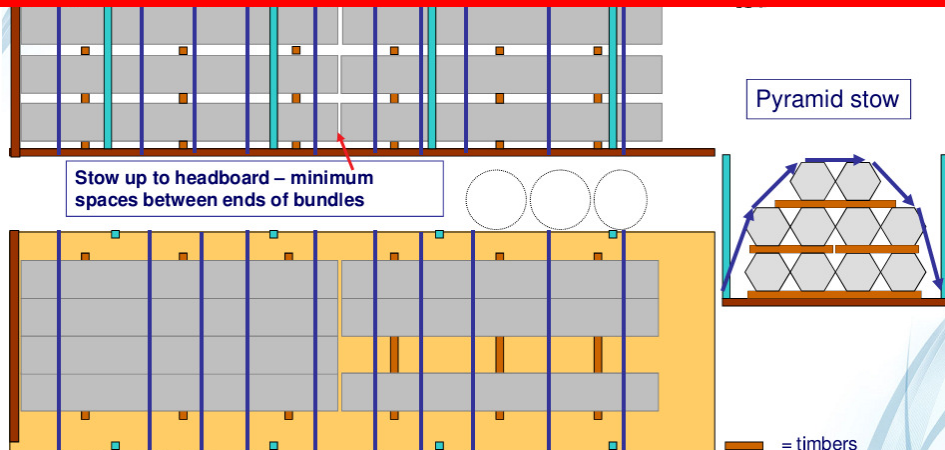


NOT WORN



LOADS MUST BE SECURED IN THE LOADING BAY – PLEASE HAVE STRAPS READY BEFORE ENTERING THE BAY
Bundled Tubes

IF USING A FLATBED TRAILER HEADBOARD HEIGHT MUST BE 1.5M
MINIMUM EQUIPMENT REQUIRED:
10 X LC 2000 STRAPS – USE 4 PER 6M LENGTH
8 X STANCHION POSTS – 4 DOWN EACH SIDE OF 1.5M HIGH, MINIMUM CROSS-SECTION 80 X 80 X 4MM



Tata Steel Tubes, Corby Collection Plan

Loading:

ColdForm		Mon- Fri	24 hours
CenFin			
6"		Mon- Thu	0700-1500
SR		Fri	2100 -0700
			0700-1500

Additional Information:

PPE Requirements:



Reporting/Arrival:



Site entrance



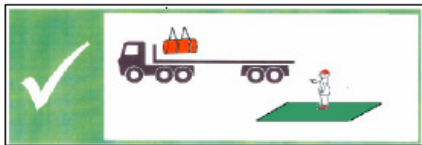
Stop at weigh bridge



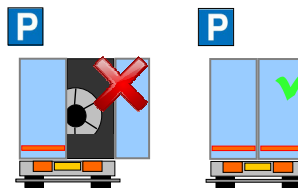
Follow directions to loading point

Loading/Securing:

Stand in green area during loading



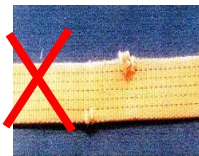
DOORS MUST BE KEPT CLOSED WHEN DRIVING ON SITE



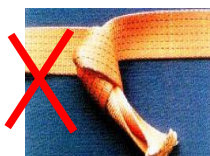
Straps LC 2000 daN



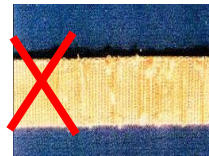
NO CUTS



NO KNOTS



NOT WORN



LOADS MUST BE SECURED IN THE LOADING BAY – PLEASE HAVE STRAPS READY BEFORE ENTERING THE BAY

FLAT BED TRAILERS:

IF USING A FLATBED TRAILER HEADBOARD HEIGHT MUST BE 1.5M

8 X STANCHION POSTS – 4 DOWN EACH SIDE OF 1.5M HIGH, MINIMUM CROSS-SECTION 80 X 80 X 4MM

