

## Tata Steel Tubes 20" Mill, Hartlepool Collection Plan

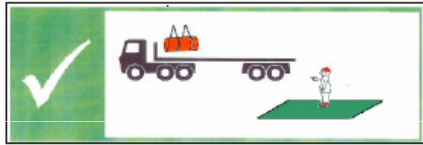
<b>Loading:</b>	<b>PPE Requirements:</b>		<b>Additional Information:</b>
Monday – Friday 0600-2200 Booking Slot System			

**Reporting/Arrival:**

On arrival stop at weighbridge for tare weight ticket	Park vehicle outside warehouse	Report to drivers reception	When instructed reverse into loading bay

**Loading/Securing:**

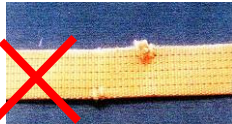
Stand in green area during loading



Minimum 12 Straps LC 2000 daN



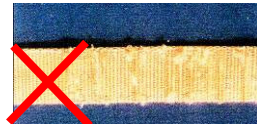
NO CUTS



NO KNOTS



NOT WORN



**LOADS MUST BE SECURED IN THE LOADING BAY – PLEASE HAVE STRAPS READY BEFORE ENTERING THE BAY**  
**Loose Tubes excl. 508 diameter**

**IF USING A FLATBED TRAILER HEADBOARD HEIGHT MUST BE 1.5M**

**MINIMUM EQUIPMENT REQUIRED:**

**12 X LC 2000 daN STRAPS**  
**8 X STANCHION POSTS – 4 DOWN EACH SIDE OF 1.5M HIGH,**  
**MINIMUM CROSS-SECTION 80 X 80 X 4MM**



**NOTE :-**  
When 6m tubes loaded, all stanchions should be pulled in by ratchet straps  
Applied after second row of tubes

