

Tata Steel Strip Products – Round Oak Rail, Brierley Hill

<p>Loading:</p> <p>Mon– Thu 1330hrs - 2100hrs Fri 1330hrs – 1900hrs 0600hrs-1330hrs by arrangement</p>	<p>PPE Requirements:</p>	<p>Additional Information:</p>
---	---------------------------------	---------------------------------------

<p>Reporting/Arrival:</p> <p>On arrival park on road opposite security</p>	<p>Loading bay</p> <p>Report to security with load reference</p>	<p>Enter site and park vehicle or enter loading bay as instructed</p>	<p>When instructed enter loading bay</p>
---	---	---	--

<p>Loading/Securing:</p> <p>Stand in green area during loading</p>	<p>DOORS MUST BE KEPT CLOSED WHEN DRIVING ON SITE</p>	<p>No loose or damaged well boards</p>		
<p>Straps LC 2000 daN</p>	<p>NO CUTS</p>	<p>NO KNOTS</p>	<p>NOT WORN</p>	<p>Clean and tidy coil well</p>

LOADS MUST BE SECURED IN THE LOADING BAY – PLEASE HAVE STRAPS READY BEFORE ENTERING THE BAY

General coil restraint SYSTEM
 Weight limits >10t <24t for low friction coils
 and >10t <30t for hot rolled coils

LRG-0008 Section 4.1

MINIMUM EQUIPMENT REQUIRED:

- 3 x LC 2000 STRAPS PER COIL – SECURED AS PER DIAGRAM. ANCHORED MIN 500mm FROM COIL FACES
- EDGE PROTECTION – ON ALL SHARP CORNERS
- WELL BOARD – COIL BLOCKED TO MAX 450mm HIGH
- 2 x STANCHION POSTS

Anti-slip matting shown for all coils originating in continental Europe

Tata Steel Strip Products – Round Oak Rail, Brierley Hill

Loading:

Mon– Thu 1330hrs - 2100hrs
Fri 1330hrs – 1900hrs
0600hrs-1330hrs by arrangement

PPE Requirements:



Additional Information:



Reporting/Arrival:

Loading bay



On arrival park on road opposite security



Report to security with load reference



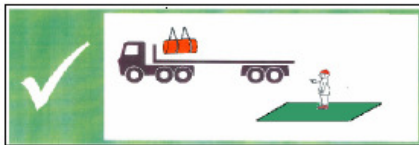
Enter site and park vehicle or enter loading bay as instructed



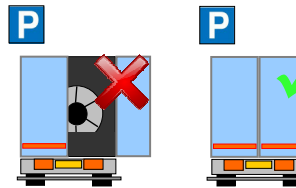
When instructed enter loading bay

Loading/Securing:

Stand in green area during loading



DOORS MUST BE KEPT CLOSED WHEN DRIVING ON SITE

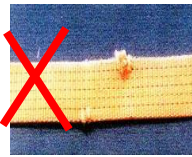


No loose or damaged well boards

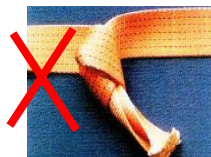
Straps LC 2000 daN



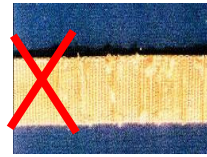
NO CUTS



NO KNOTS



NOT WORN



Clean and tidy coil well

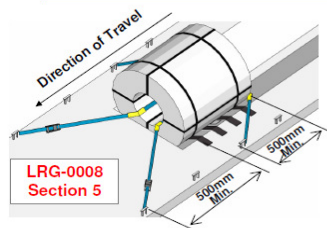
LOADS MUST BE SECURED IN THE LOADING BAY – PLEASE HAVE STRAPS READY BEFORE ENTERING THE BAY

Restraint system without stanchion posts



MINIMUM EQUIPMENT REQUIRED:

2 x LC 2000 STRAPS PER COIL – SECURED AS PER DIAGRAM
EDGE PROTECTION – ON ALL EXPOSED CORNERS



Anti-slip matting shown for all coils originating in continental Europe

This restraint method is **NOT** to be used for **topple sensitive coils**

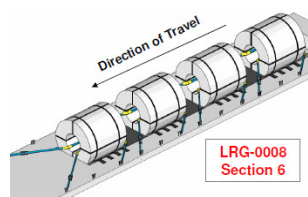


Restraining multiple coils
Weight limits <10t



MINIMUM EQUIPMENT REQUIRED:

2 x LC 2000 STRAPS PER COIL – SECURED AS PER DIAGRAM
EDGE PROTECTION – ON ALL EXPOSED CORNERS



Anti-slip matting shown for all coils originating in continental Europe



This restraint method is **NOT** to be used for **topple sensitive coils**.

Weight Limits

- Maximum weight **10 tonnes**
- Coil must be positioned against the front of the well for forward restraint.
- Bore straps must be anchored a minimum of **500mm** forward of the front and rear faces of the coil.

- First Coil must be positioned against the front of the well for forward restraint.
- No more than **ONE** well board to be used as blocking between coils.
- Individual coil weights **MUST** not exceed **10 tonnes**.
- Coils above 10 tonnes must be restrained against stanchion posts as shown in sections **4.1 guideline**.