

Loading:

Monday – Friday 0800-1600

PPE Requirements:



Additional Information:



Reporting/Arrival:



ON ARRIVAL STOP AT VISITOR
CENTRE GATE **A**



**REDBOURN HUB
DRIVER RECEPTION**



**LOADING AREA
REDBOURN PRAIRE**

Loading/Securing:

Stand in green
area during
loading

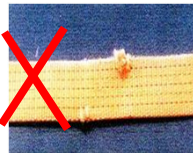


**DOORS MUST BE KEPT CLOSED WHEN
DRIVING ON SITE**

Straps LC 2000 daN



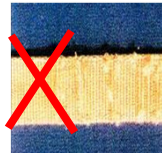
NO CUTS



NO KNOTS

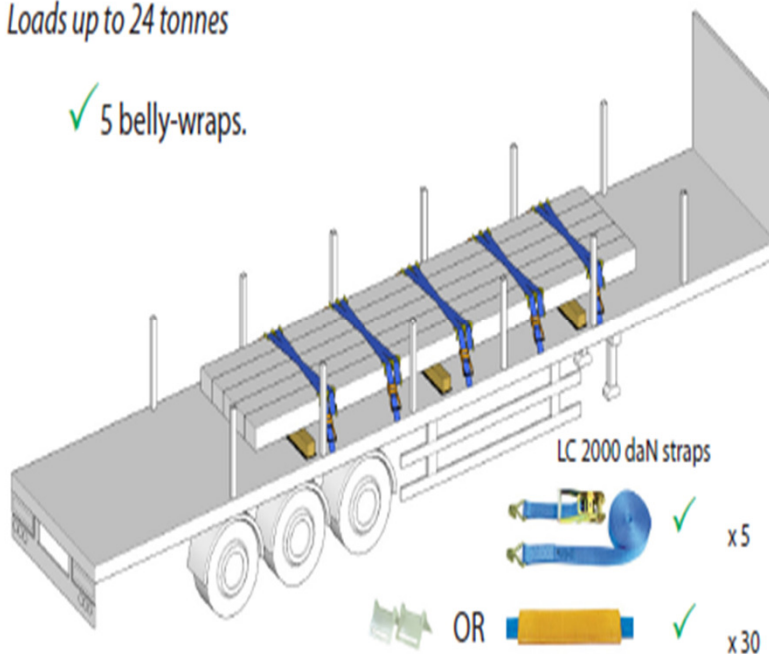


NOT WORN



Loads up to 24 tonnes

✓ 5 belly-wraps.



- ✓ Square base timbers on anti-slip matting.
- ✓ Minimum of LC 2000 daN webbing straps.
- ✓ Edge protection as required.

LC 2000 daN straps



x5



OR



x30

LOADS MUST BE SECURED IN THE LOADING BAY – PLEASE HAVE STRAPS READY BEFORE ENTERING THE BAY