

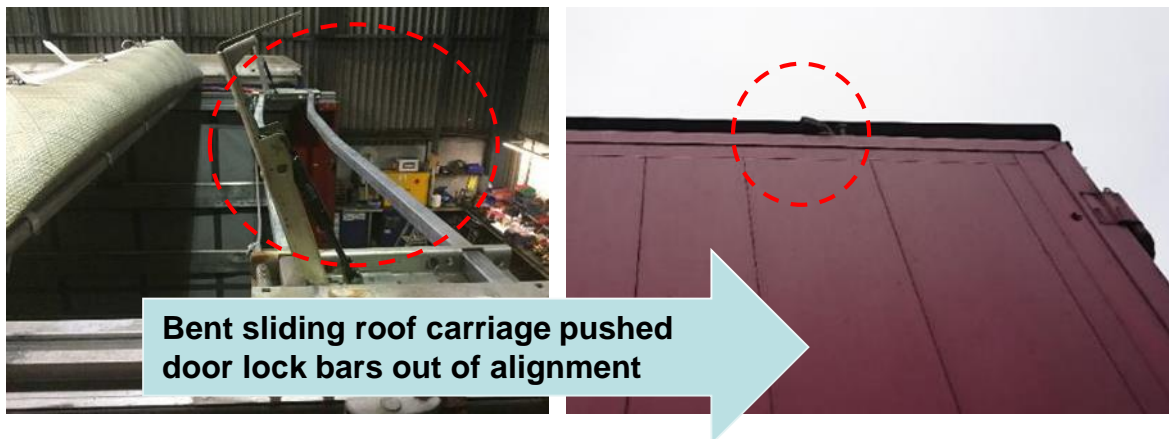
Update Bulletin

Injury from Defective Trailer Door

What Happened:

Follow up Bulletin to AB 007 2020

While attempting to open a trailer door with a stiff door handle, a Meet & Greet Inspector sustained a broken right finger and a severe laceration which required 5 stitches. He was prescribed strong medication and antibiotics. He was unable to return to his duties which resulted in a 9 day lost time injury.



Findings:

- Trailer inspected by owning haulier who confirmed the trailer had a bent sliding roof carriage. This had caused the door locking bar and keepers to be pushed out of alignment which put pressure on the door handle release mechanism making it very stiff.
- Method used by IP to open the door handle allowed his finger to be in contact with moving parts.
- IP was not wearing the PPE gloves issued to protect the hands – while this may not have prevented the finger from being broken, it may have prevented the finger from sustaining the deep laceration.

Recommendations:

Drivers and Hauliers should:-

- ✓ Always wear safety gloves when opening and closing trailers doors
- ✓ Trailer door handles and catches should open without undue pressure. Always report as a defect trailer door handles and catches that will not open by hand.
- ✓ Never use improvised objects such as screwdrivers or timbers to force a door catch and handle to open.
- ✓ Ensure drivers actively report all defects they find on trailers for repair