



the **sense** of logistics

Module 8

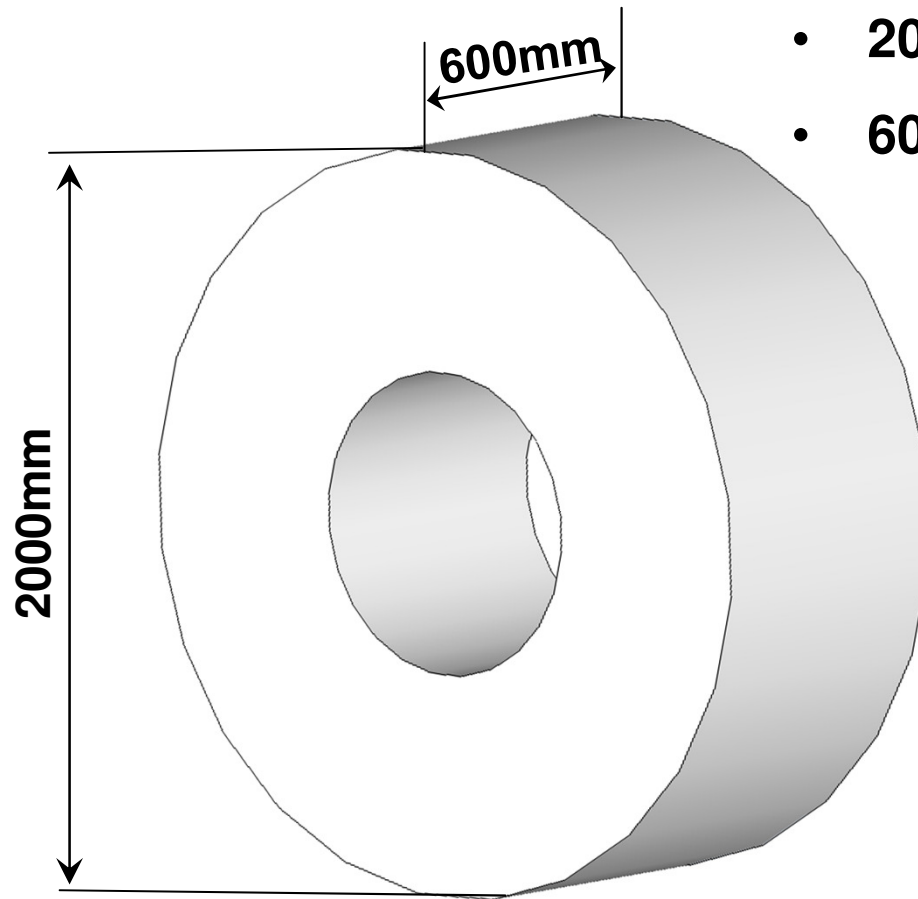
Wide Coil in Well

Tata Steel Ref – LRG-0008 BH Issue 2 – 07.11.2013

P&O  **Ferrymasters**

A Dubai World Company

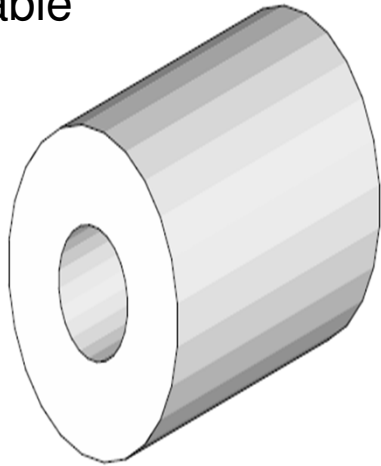
Coil Dimensions



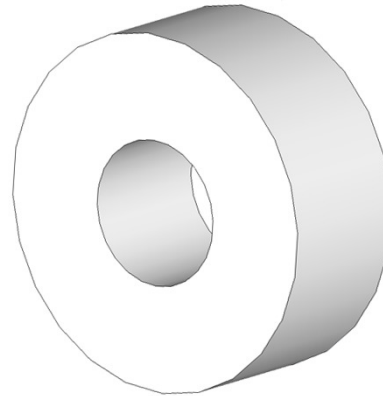
- 2000mm maximum diameter
- 600mm minimum sheet width

Coil Characteristics

Stable



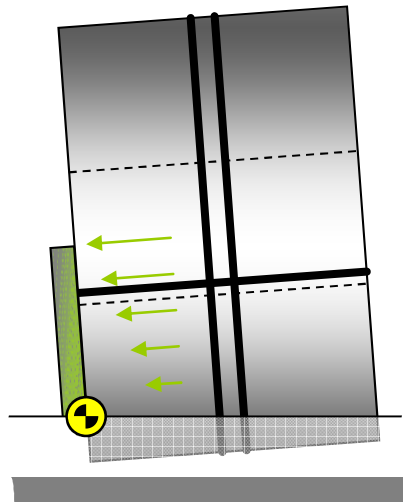
Topple Sensitive



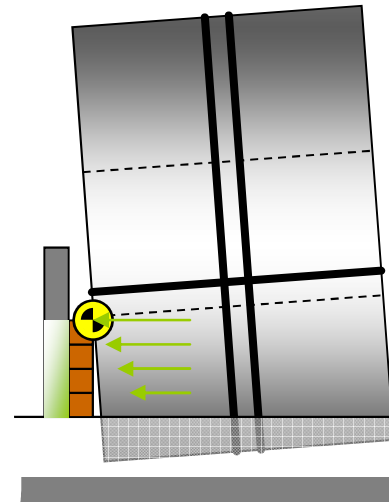
- **Stable coils:** Diameter **less than** 1.4 x Sheet width.
- **Topple sensitive coils:** Diameter **greater than** 1.4 x Sheet width.

Why well boards & timbers?

Situation I

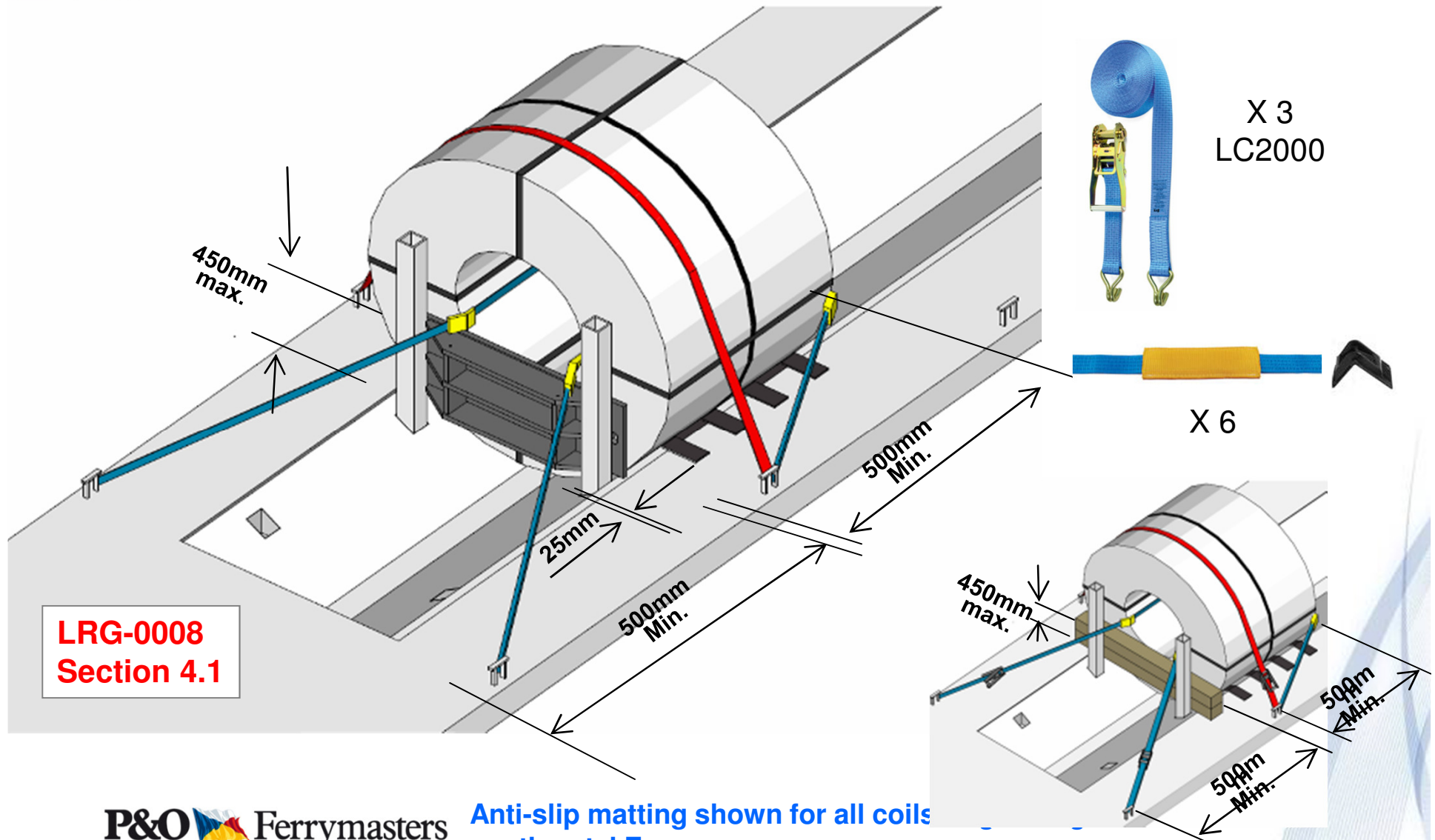


Situation II



Stanchion posts 80 x 80 x 5mm

All coils <24T (LRG0008 4.1)

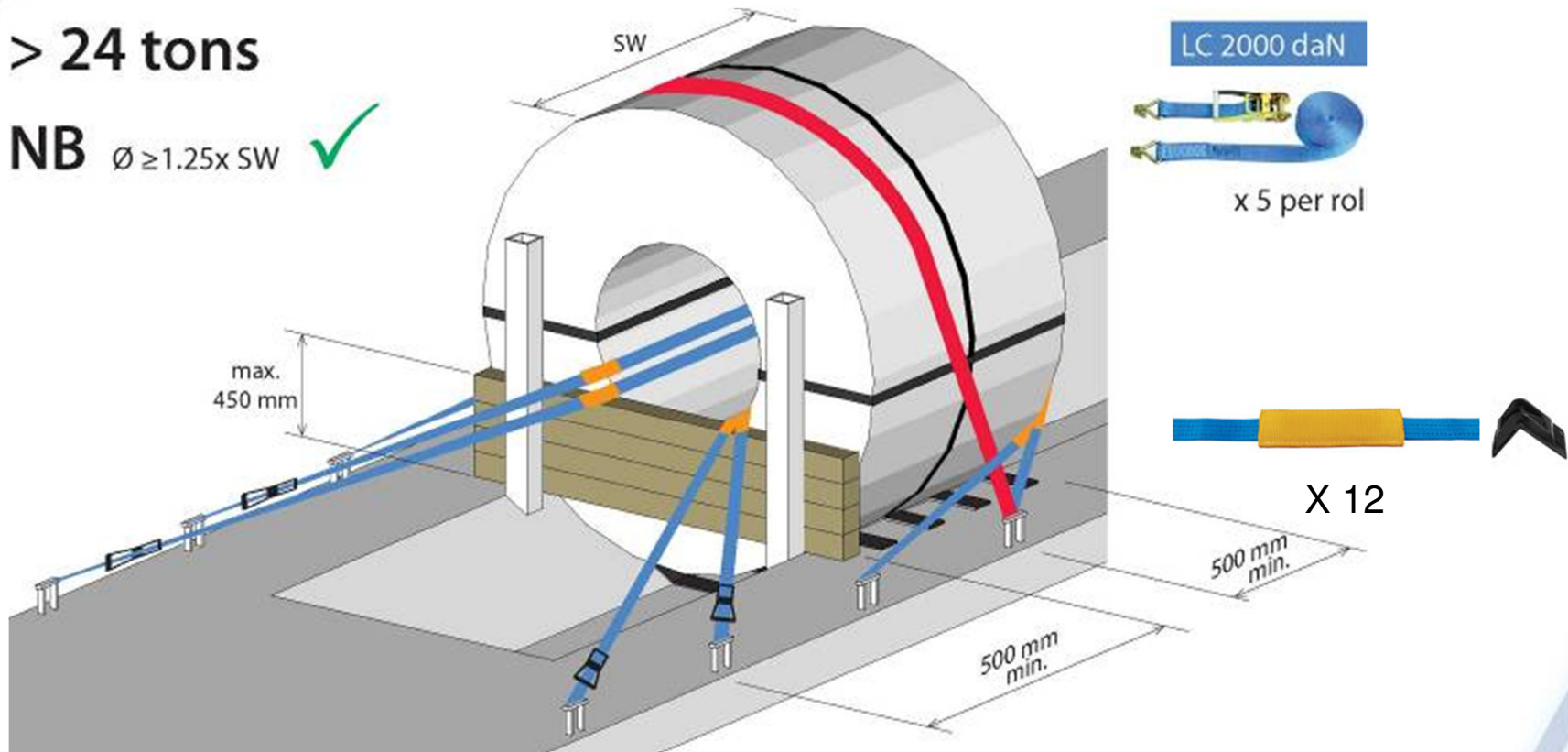


LRG-0008
Section 4.1

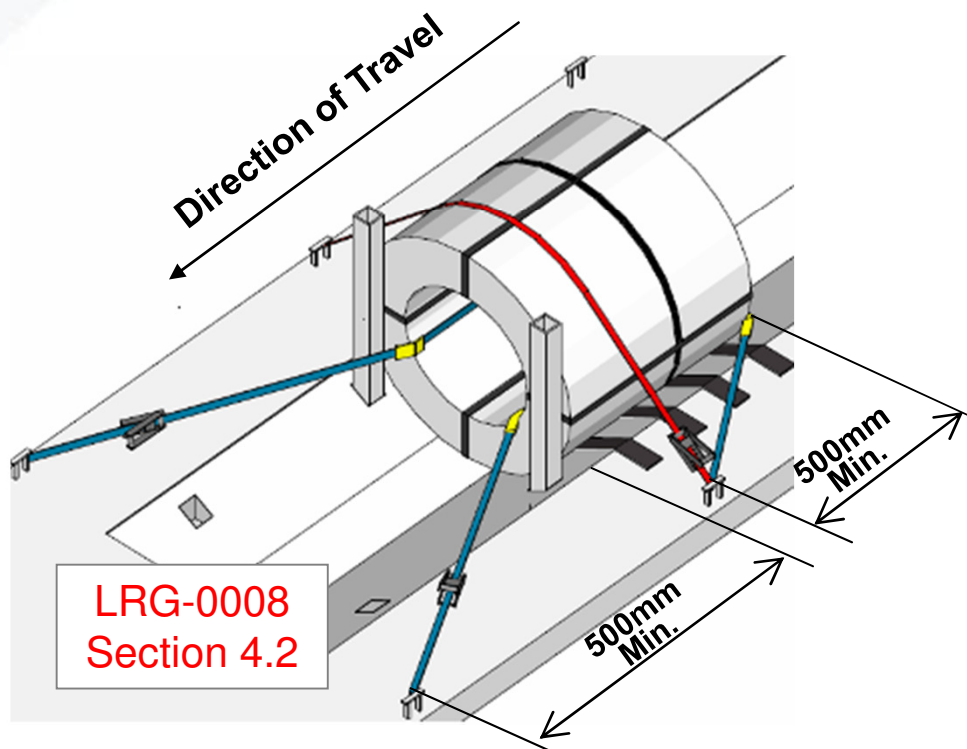
Coils >24T (LRG0008 4.1)

> 24 tons

NB $\varnothing \geq 1.25 \times SW$ ✓



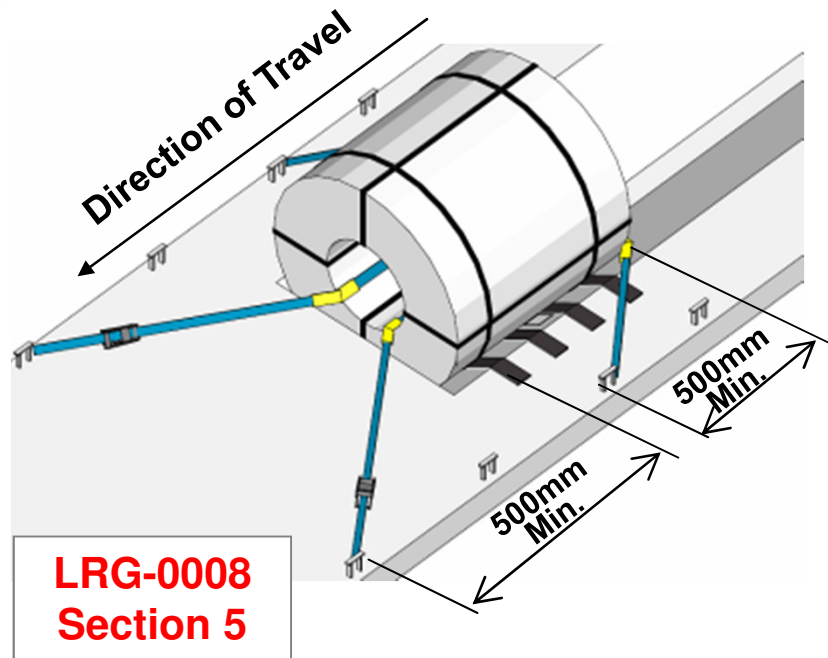
All Stable Coils (LRG0008 4.2)
Topple Sensitive Coils < 10 tons (LRG0008 4.2)



Anti-slip matting shown for all coils originating in continental Europe



Stable Coils < 10 tons (LRG0008 5.1)



- Bore straps must be anchored a minimum of **500mm** forward of the front and rear faces of the coil.

Anti-slip matting shown for all coils originating in continental Europe

This restraint method is **NOT** to be used for **topple sensitive coils**

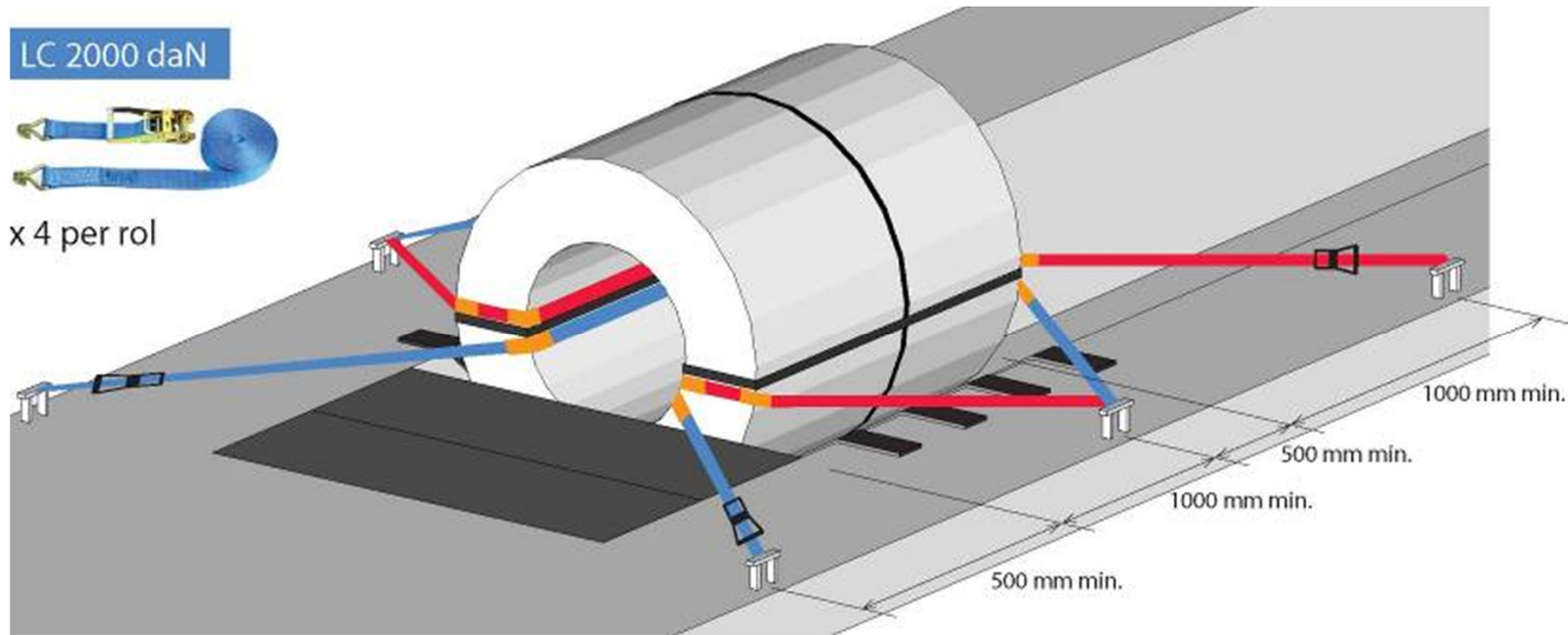
Stable Coils < 10 tons (LRG0008 5.2)

Max. 10 tons NB $\text{Ø} \geq 1.25 \times \text{SW}$

LC 2000 daN



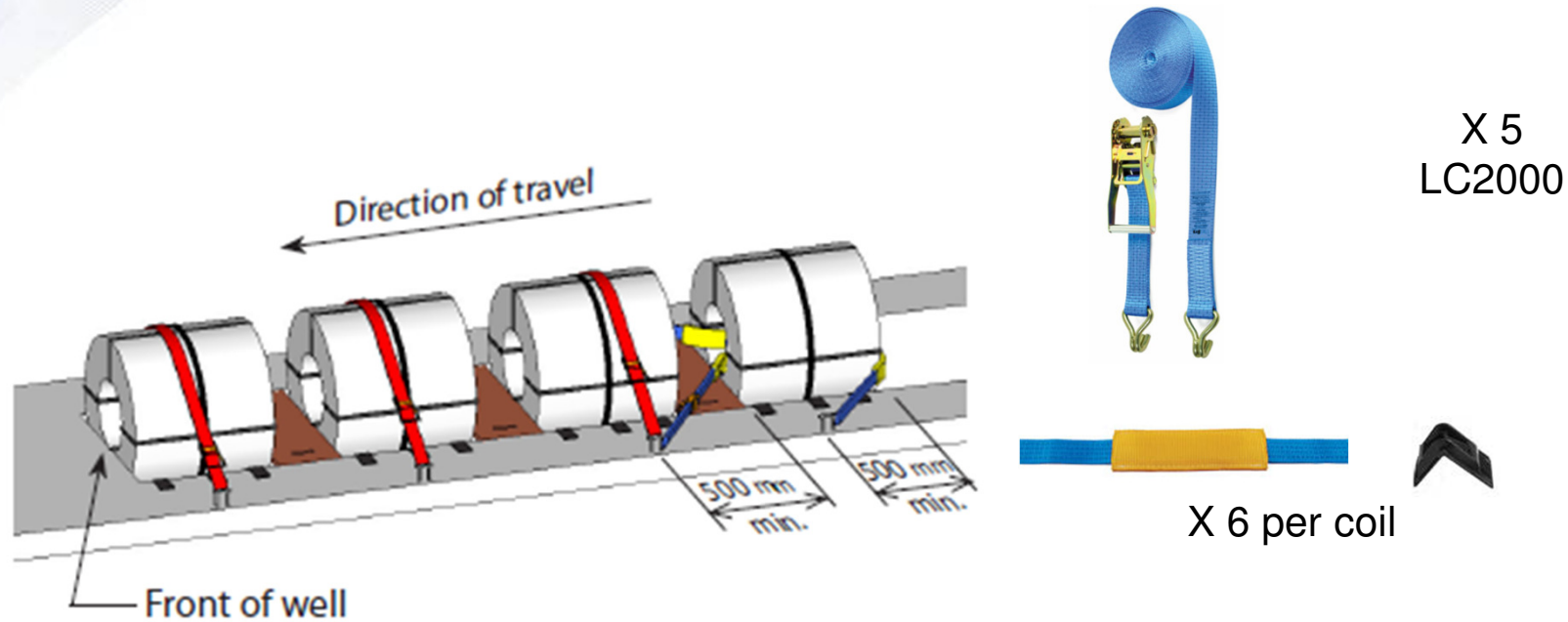
x 4 per rol



X 12

- If more than **ONE** wellboard is required between coils to allow the crane to load or to position correctly for vehicle axel weights
- Individual coil weights **MUST** not exceed **10 tonnes**.

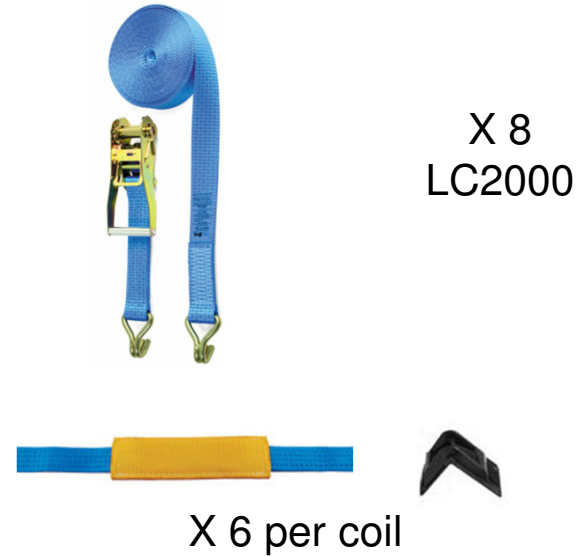
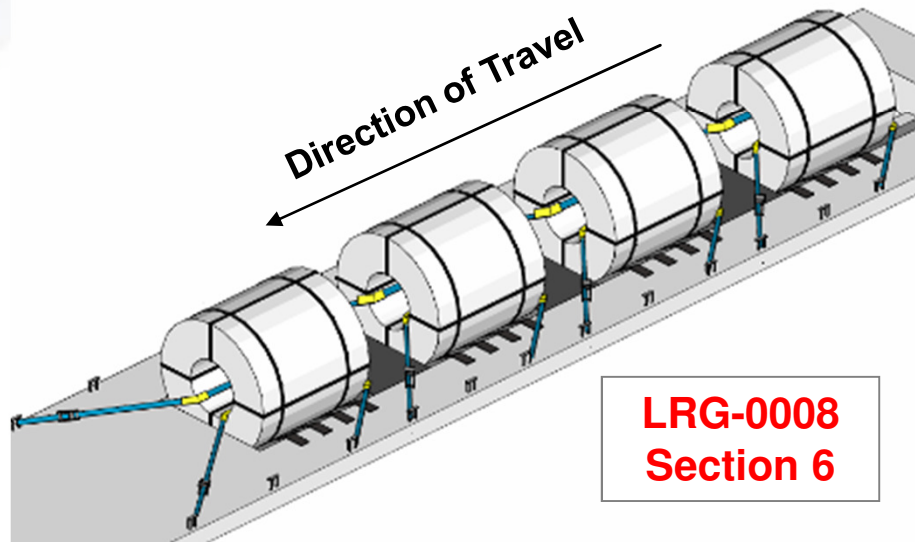
Multiple *Stable* coils < 10 tons (LRG0008 6.1)



Anti-slip matting shown for all coils originating in continental Europe

- No more than **ONE** well board to be used as blocking between coils.
- Individual coil weights **MUST** not exceed **10 tonnes**.

Multiple *Stable* coils < 10 tons (LRG0008 6.2)



- No more than **ONE** well board to be used as blocking between coils.
- Individual coil weights **MUST** not exceed **10 tonnes**.

Anti-slip matting shown for all coils originating in continental Europe